

SOFAR 25K~50KTLX-G3

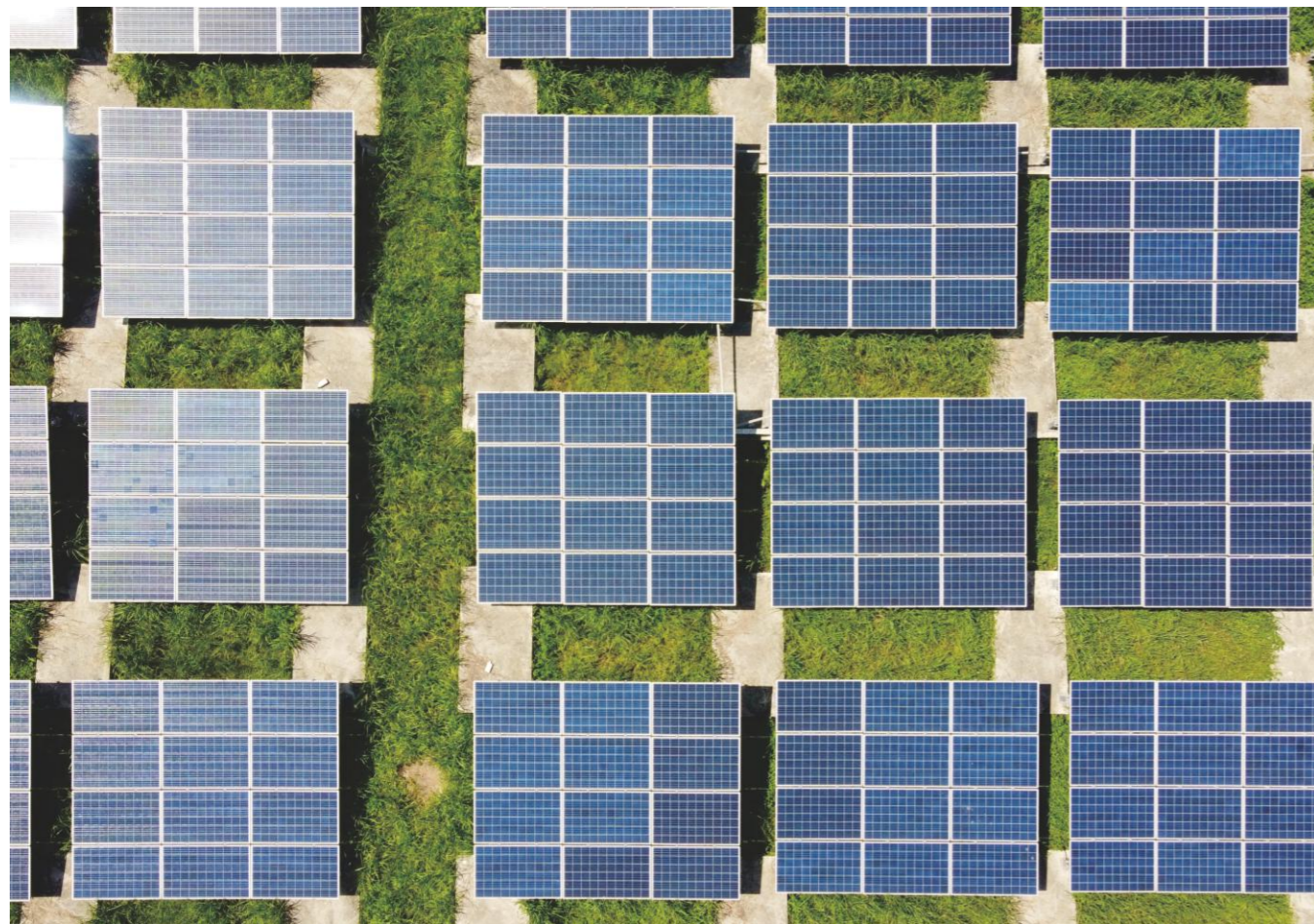
25 / 30 / 33 / 36 / 40 / 45 / 50 kW

THREE-PHASE THREE TO FOUR MPPTS



Product advantages

- Max. efficiency up to 98.90%
- Up to 4 MPPTs with DC overload capability (up to 150%)
- Type II SPD for both DC and AC side
- Prolonged AC overload capability (110%)
- Low start-up voltage, wide MPPT voltage range
- Compatible with 500 W+ modules
- I-V curve scanning function



Datasheet	SOFAR 25KTLX-G3	SOFAR 30KTLX-G3	SOFAR 33KTLX-G3	SOFAR 36KTLX-G3	SOFAR 40KTLX-G3	SOFAR 45KTLX-G3	SOFAR 50KTLX-G3
Input (DC)							
Recommended max. PV input power (Wp)	37500	45000	49500	54000	60000	67500	75000
Max. DC power for single MPPT (W)	25000						
Number of MPP trackers	3			4			
Number of DC inputs	2 for each MPPT						
Max. input voltage (V)	1100						
Start-up voltage (V)	200						
Rated input voltage (V)	620						
MPPT operating voltage range (V)	180-1000						
Full power MPPT voltage range (V)	480-850		510-850	540-850	480-850	510-850	540-850
Max. input MPPT current (A)	3*40			4*40			
Max. input short circuit current per MPPT (A)	3*50			4*50			
Output (AC)							
Rated power (W)	25000	30000	33000	36000	40000	45000	50000
Max. AC power (VA)	28000	34000	37000	40000	44000	50000	55000
Max. output current (A)	42.4	51.5	56.0	60.6	66.7	75.8	83.3
Rated grid voltage	3 / N / PE, 230 V / 400 Vac						
Grid voltage range	310 - 480 Vac (according to local standard)						
Rated grid frequency	50 Hz / 60 Hz						
Grid frequency range	45 Hz-55 Hz / 55 Hz-65 Hz (according to local standard)						
Active power adjustable range	0-100%						
THDi	< 3%						
Power factor	1 default (adjustable +/-0.8)						
Efficiency							
Max. efficiency	98.6%			98.8%			
European efficiency	98.2%						
Protection							
DC reverse polarity protection	Yes						
Anti-islanding protection	Yes						
Leakage current protection	Yes						
Ground fault monitoring	Yes						
PV-array string fault monitoring	Yes						
Feed-in limitation function	Yes						
DC switch	Yes						
Input / output SPD	PV: type II standard, AC: type II standard						
Communication							
Standard Communication mode	RS485/Bluetooth, Optional: WiFi/Ethernet						
General Data							
Ambient temperature range	-30°C ~ +60°C						
Self-consumption at night (W)	< 3						
Topology	Transformerless						
Degree of protection	IP65						
Allowable relative humidity range	0-100%						
Max. operating altitude	4000 m						
Weight (kg)	36			37			
Cooling	Fan						
Dimension (mm)	585*480*220						
Display	LCD, App via Bluetooth						
Standard							
EMC	EN 61000-6-1, EN 61000-6-2, EN 61000-6-3, EN 61000-6-4						
Safety standards	IEC 62109-1/2, IEC 62116, IEC 61727, IEC 61683, IEC 60068(1,2,14,30), IEC 60255						
Grid standards	VDE V 0124-100, V 0126-1-1, VDE-AR-N 4105, CEI 0-21/CEI 0-16, UNE 206 007-1, EN 50549, G98/G99, EN 50530						

* All specifications are subject to change without notice.